

Tewkesbury Borough Local Plan to 2011

Adopted
March 2006

Proposals Map



Tewkesbury Borough Local Plan

to 2011

Adopted
March 2006

1. Borough Key Map

Fold out legend inside back cover

C J Shaw
Strategic Director
of Operations



Tewkesbury Borough Local Plan

to 2011

Adopted
March 2006

Proposals Map

Contents

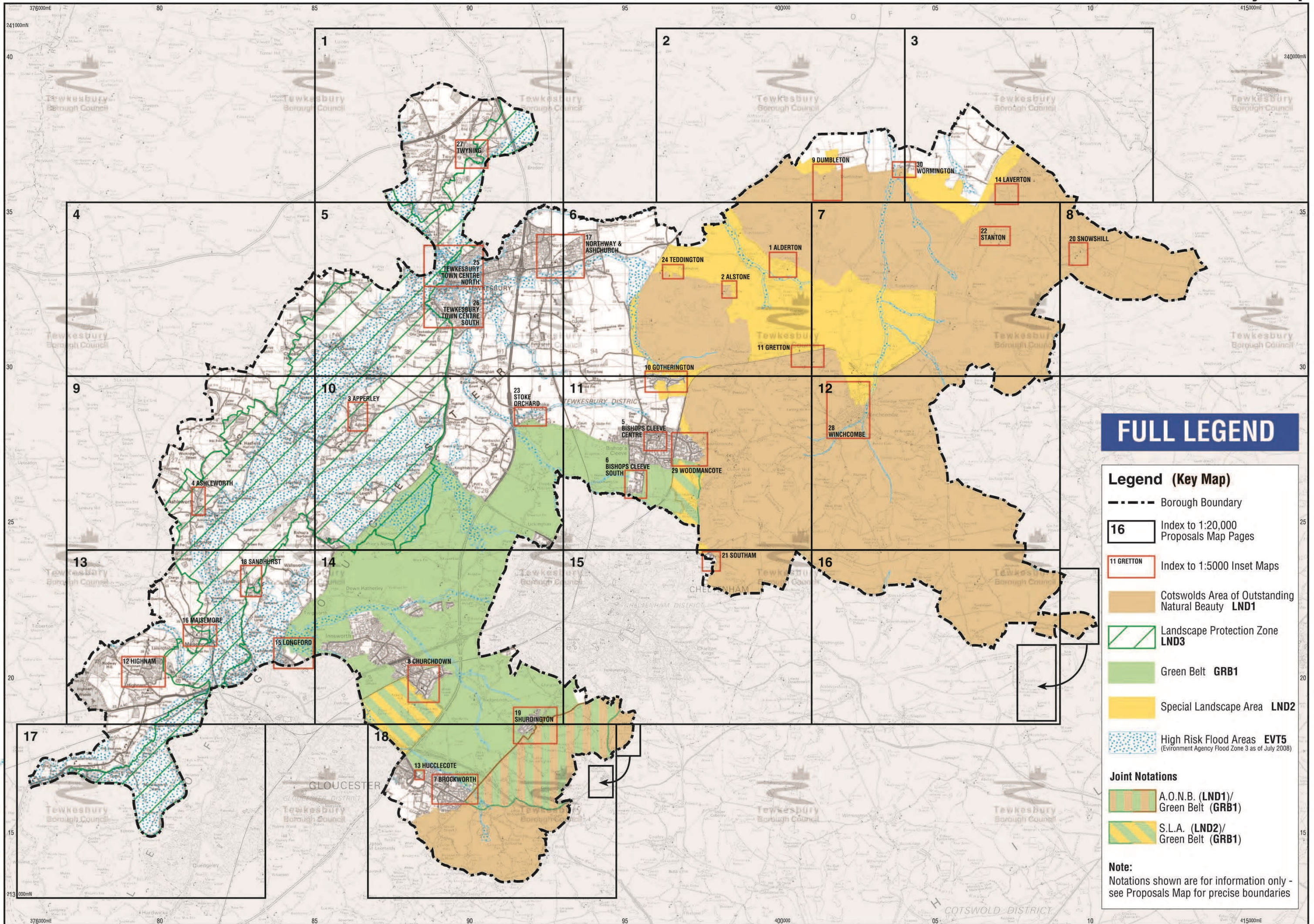
1. Borough Key Map

2. Proposals Map

C J Shaw
Strategic Director
of Operations



Tewkesbury
Borough Council



FULL LEGEND

- Legend (Key Map)**
- Borough Boundary
 - Index to 1:20,000 Proposals Map Pages
 - Index to 1:5000 Inset Maps
 - Cotswolds Area of Outstanding Natural Beauty **LND1**
 - Landscape Protection Zone **LND3**
 - Green Belt **GRB1**
 - Special Landscape Area **LND2**
 - High Risk Flood Areas **EVT5**
(Environment Agency Flood Zone 3 as of July 2008)
- Joint Notations**
- A.O.N.B. (**LND1**)/
Green Belt (**GRB1**)
 - S.L.A. (**LND2**)/
Green Belt (**GRB1**)

Note:
Notations shown are for information only - see Proposals Map for precise boundaries

Tewkesbury Borough Local Plan

to 2011

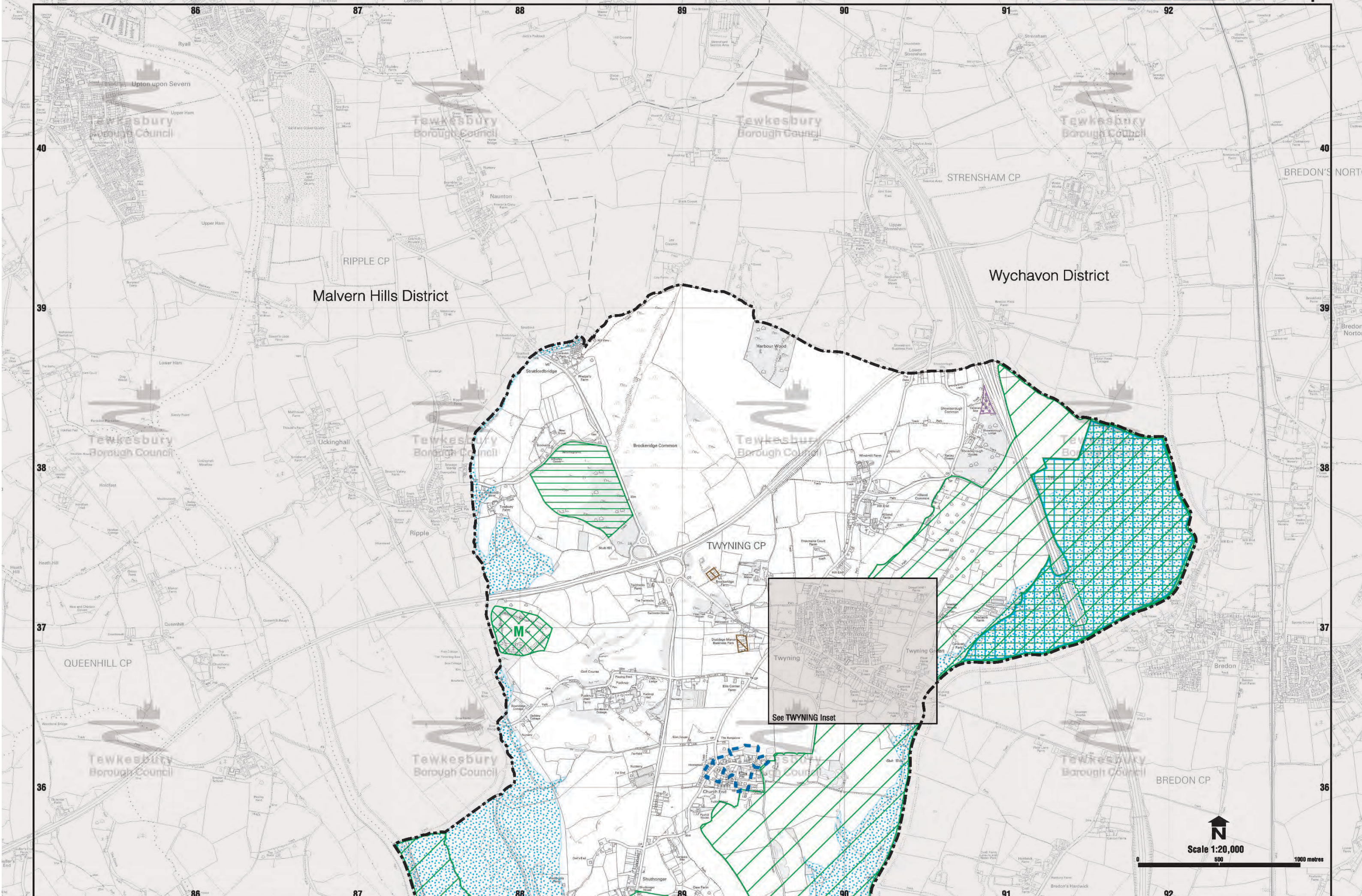
Adopted
March 2006

2. Proposals Map

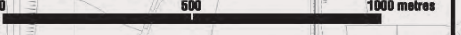
Fold out legend inside back cover

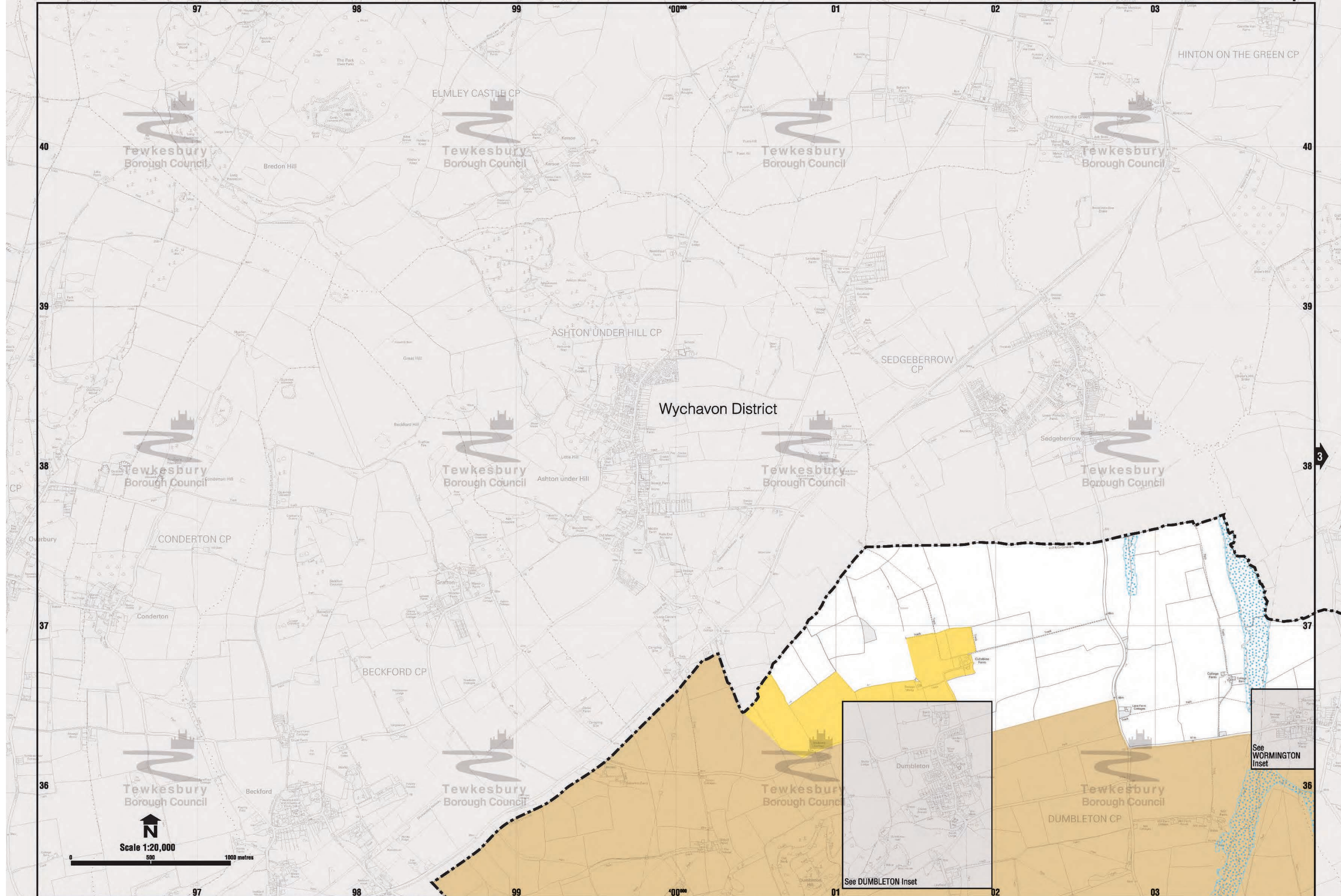
C J Shaw
Strategic Director
of Operations

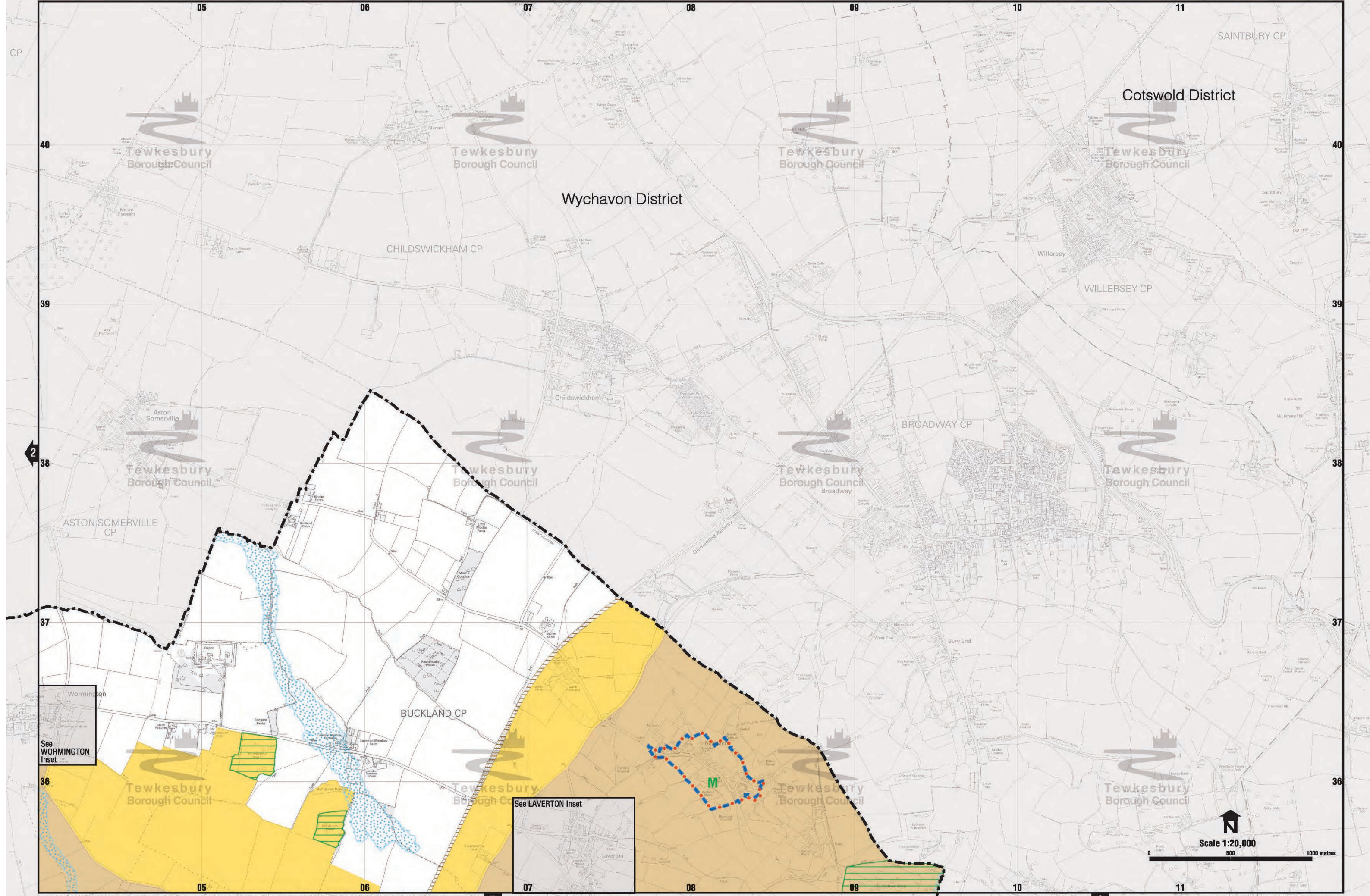




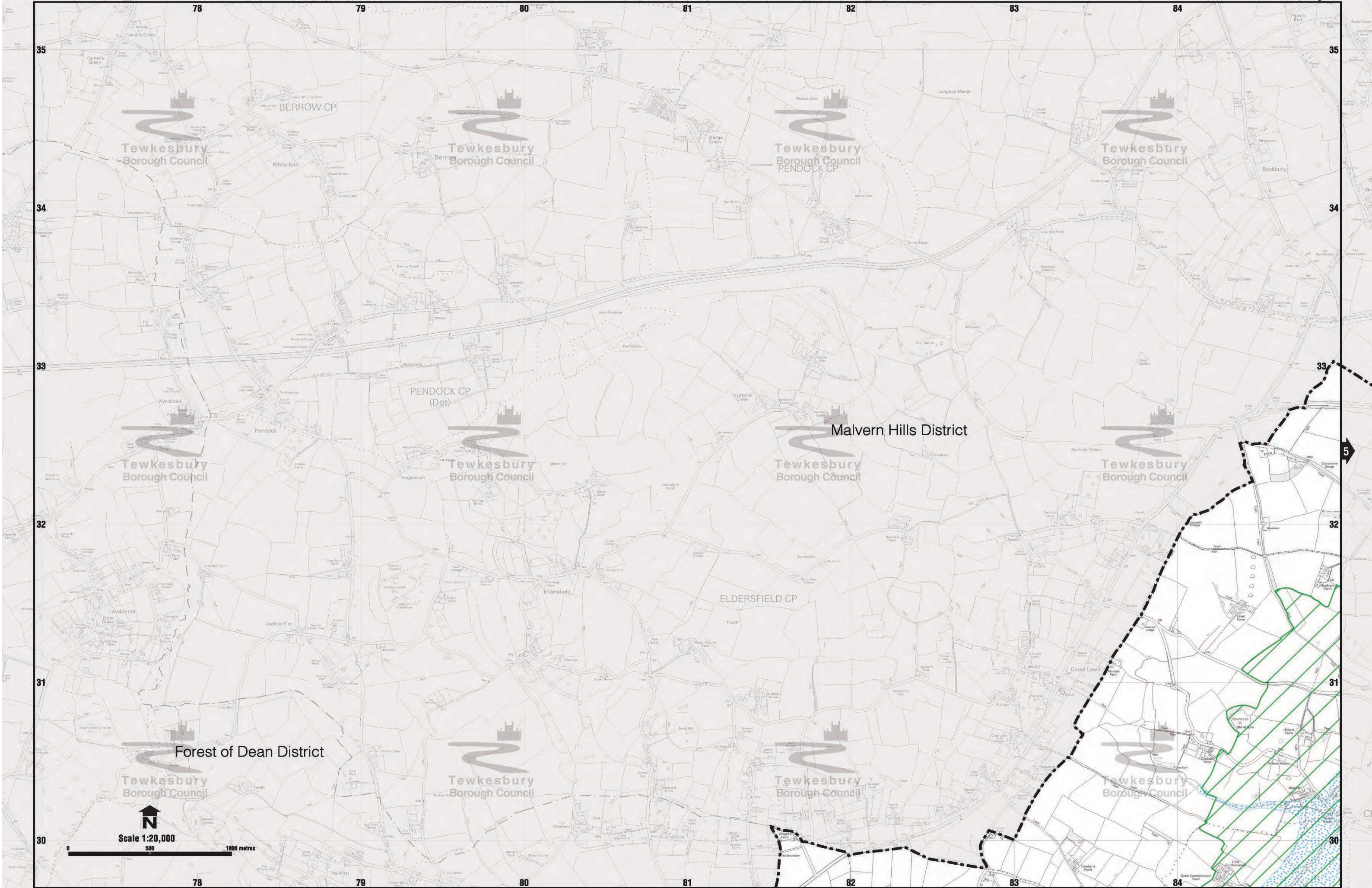
Scale 1:20,000







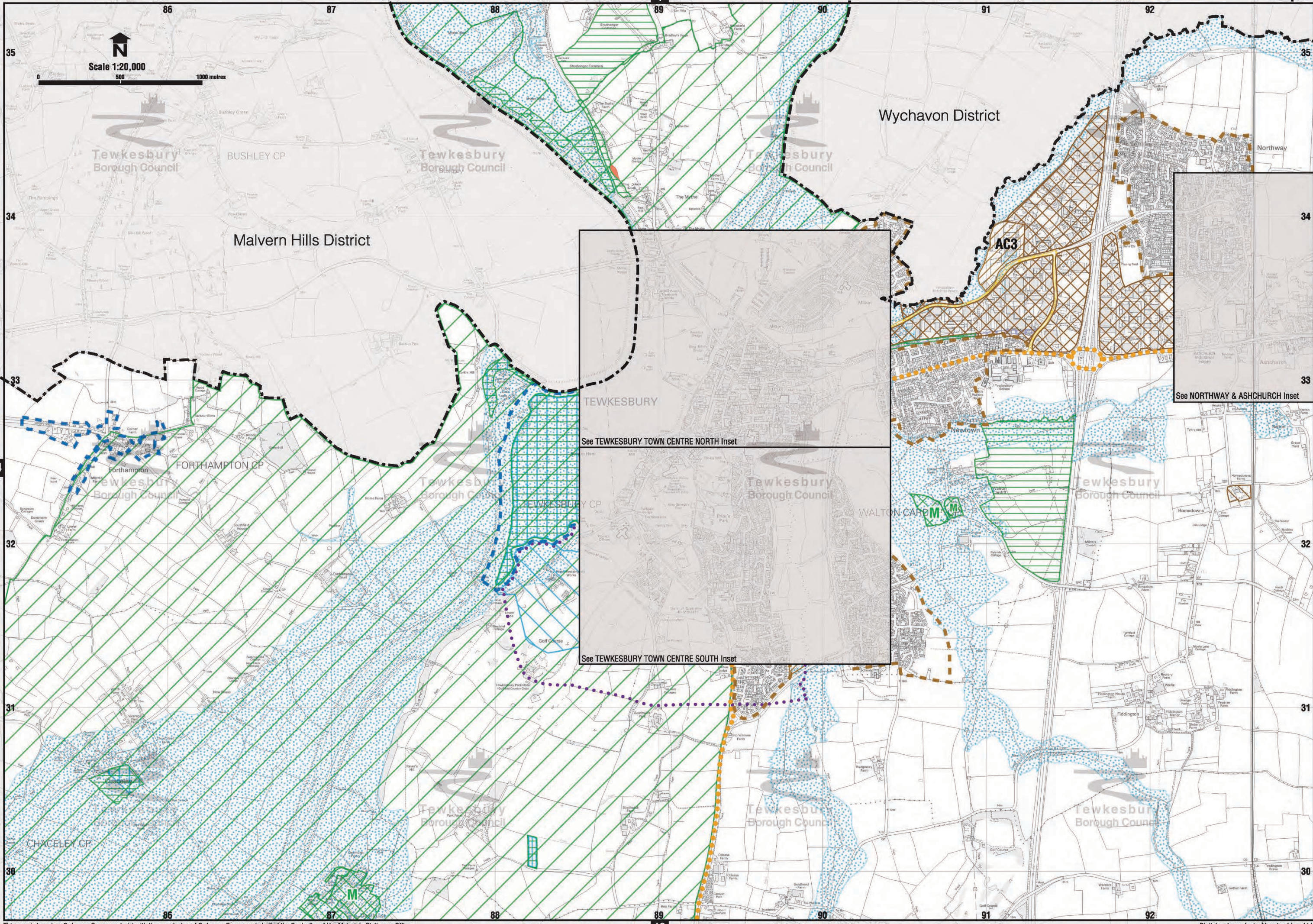
This map is based on Ordnance Survey material with the permission of Ordnance Survey on behalf of the Controller of Her Majesty's Stationery Office. © Crown copyright. Unauthorised reproduction infringes Crown copyright and may lead to prosecution or civil proceedings. Licence No 100025298. 2008.



Scale 1:20,000
0 500 1000 metres

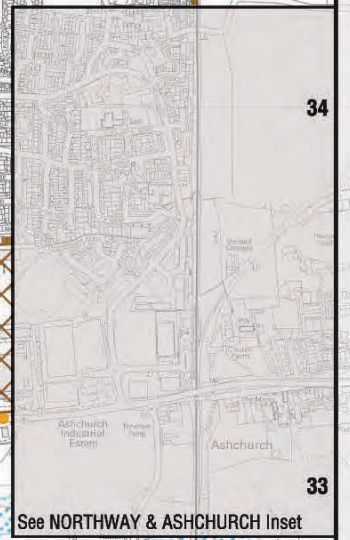


Scale 1:20,000

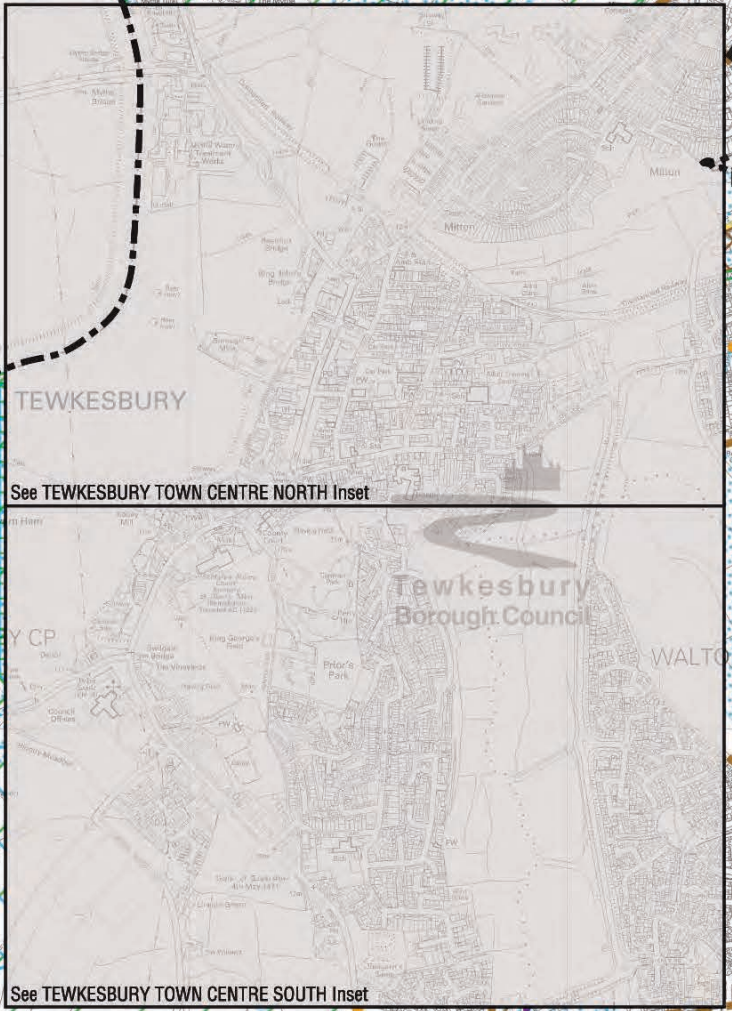


Wychavon District

Malvern Hills District



See NORTHWAY & ASHCHURCH Inset



See TEWKESBURY TOWN CENTRE NORTH Inset

See TEWKESBURY TOWN CENTRE SOUTH Inset

Scale 1:20,000
0 500 1000 metres

Wychavon District

See NORTHWAY & ASHCHURCH Inset

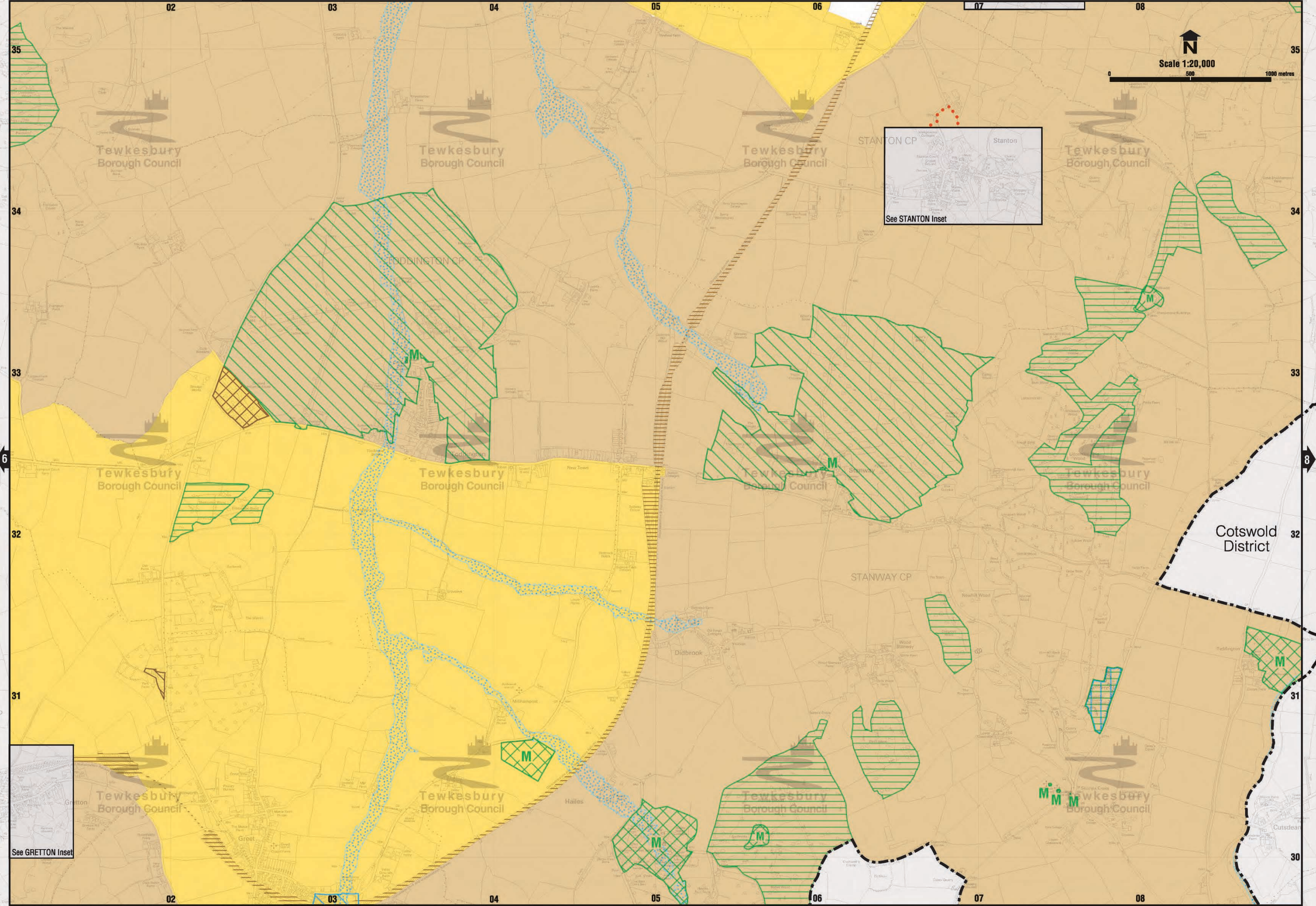
Teddington
TEDDINGTON CP
See TEDDINGTON Inset

See ALDERTON Inset

Alstone
See ALSTONE Inset

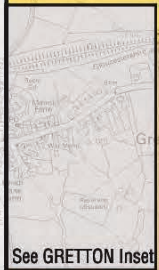
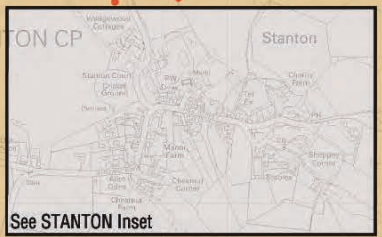
See GOTHERINGTON Inset

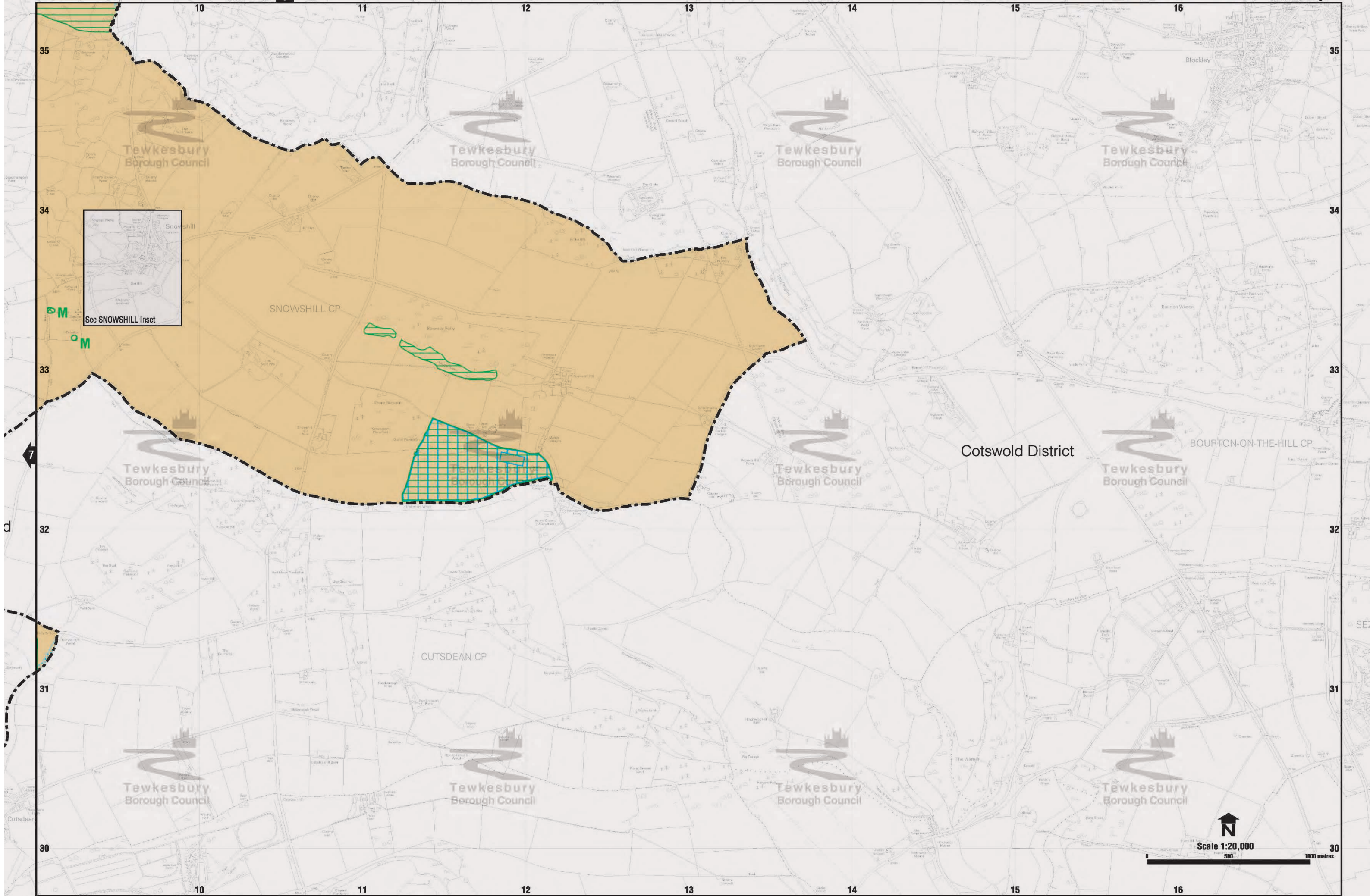
See GRETTON Inset



Scale 1:20,000

0 500 1000 metres



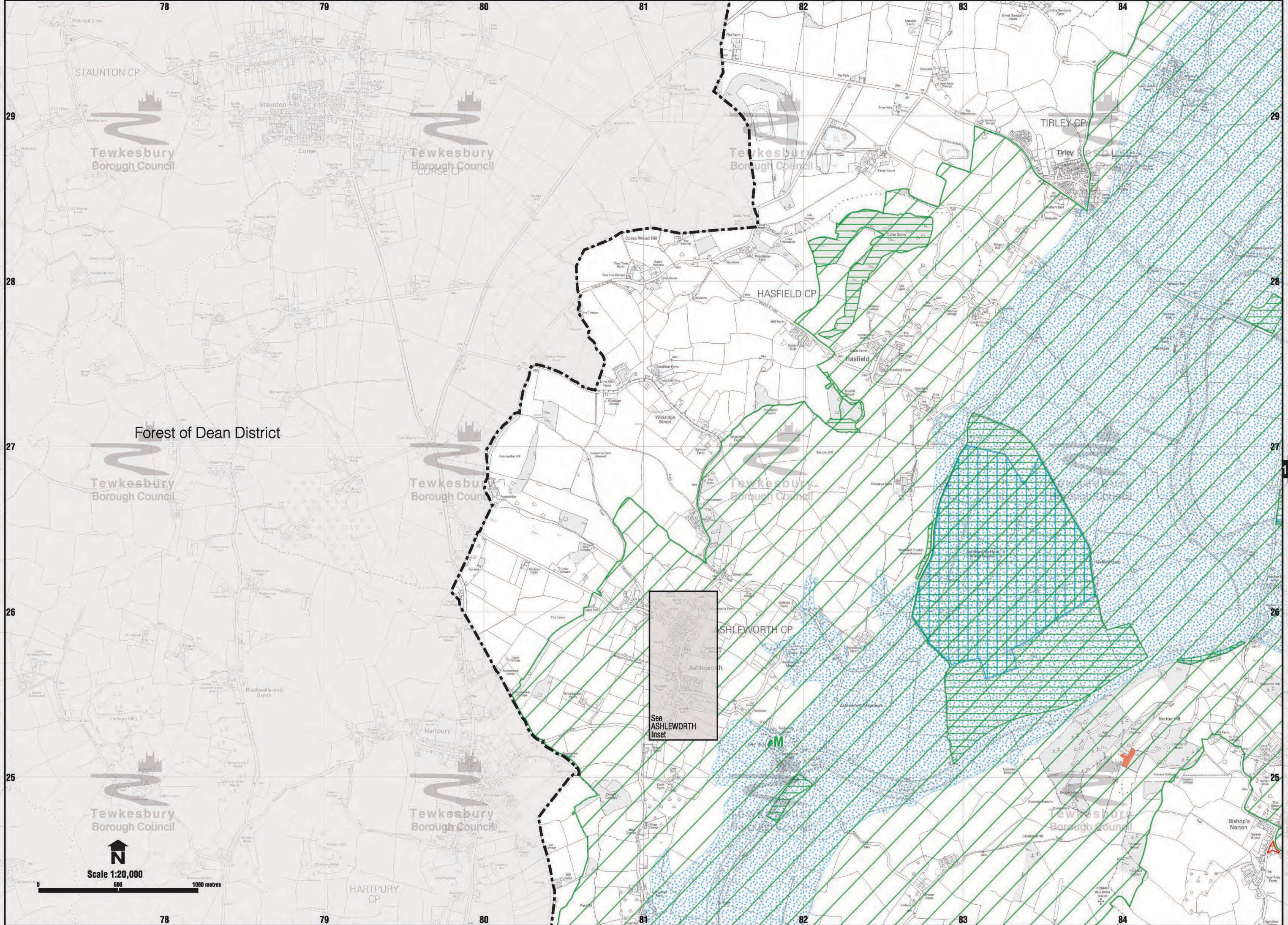


See SNOWSHILL Inset

Scale 1:20,000
0 500 1000 metres

This map is based on Ordnance Survey material with the permission of Ordnance Survey on behalf of the Controller of Her Majesty's Stationery Office. © Crown copyright. Unauthorised reproduction infringes Crown copyright and may lead to prosecution or civil proceedings. Licence No 100025298. 2008.

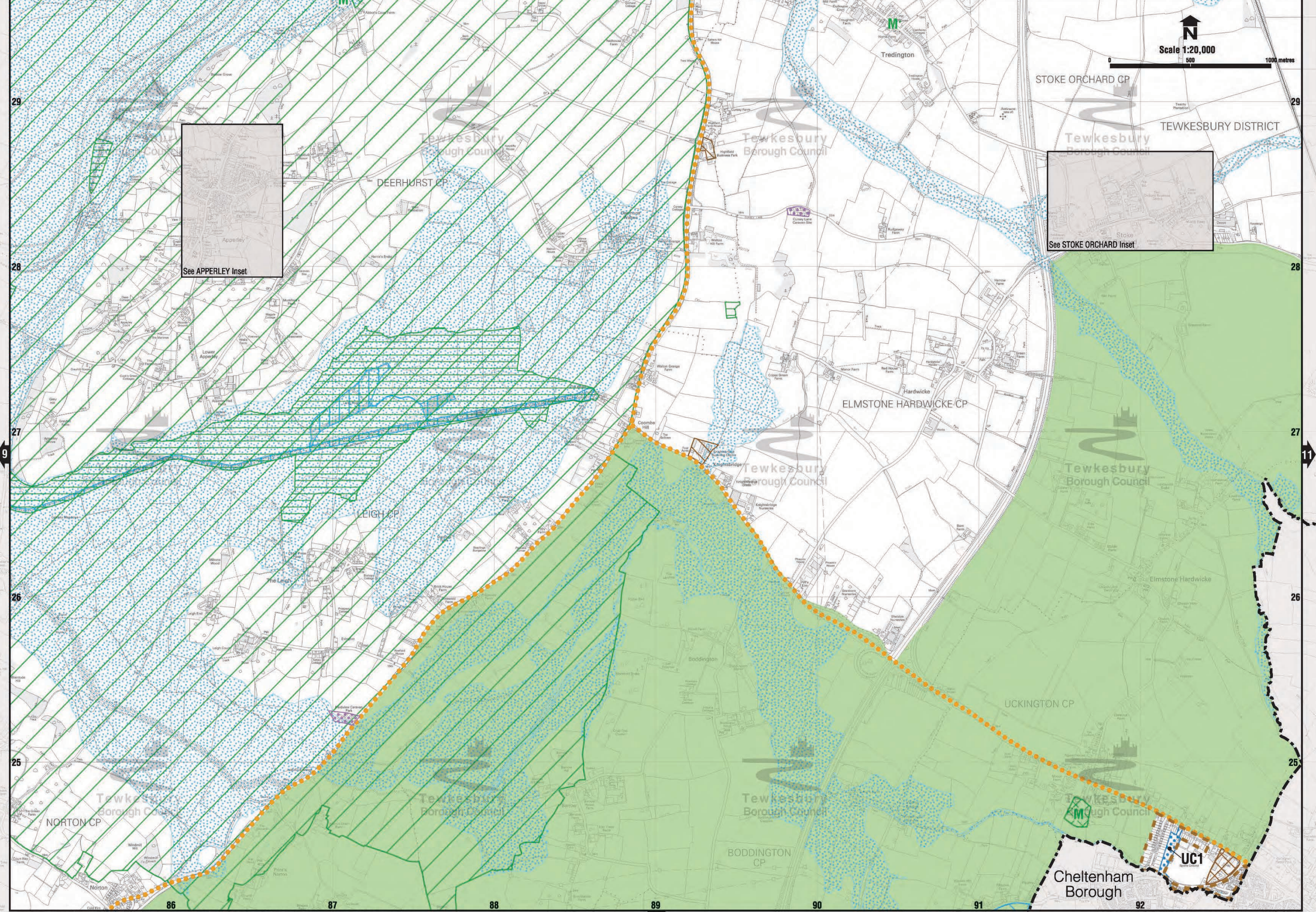
Digital cartography by Mapping Ideas Ltd

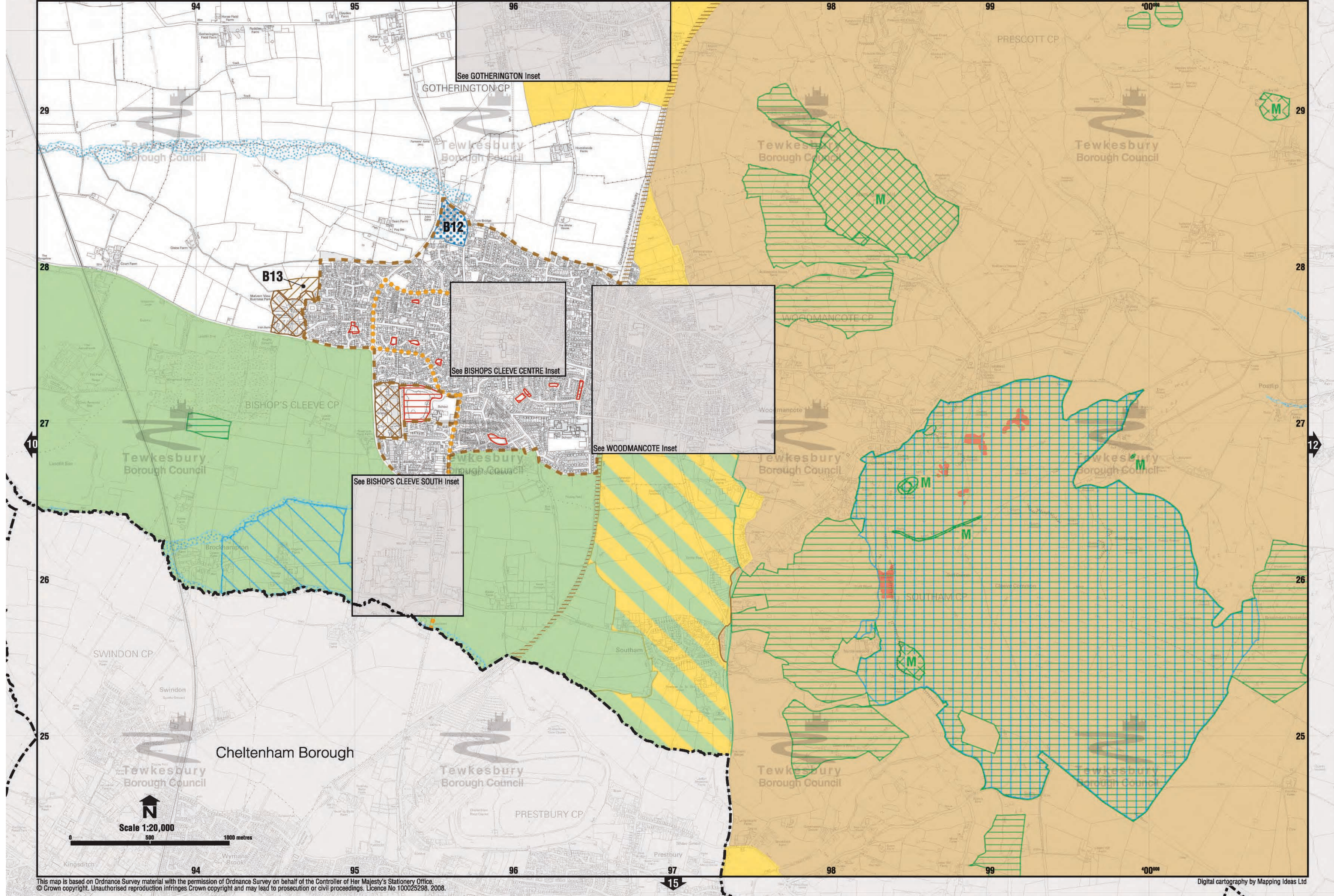


Forest of Dean District

Scale 1:20,000
0 500 1000 metres

See
ASHLEWORTH
Inset





See GOTHERINGTON Inset

See BISHOPS CLEEVE CENTRE Inset

See WOODMANCOTE Inset

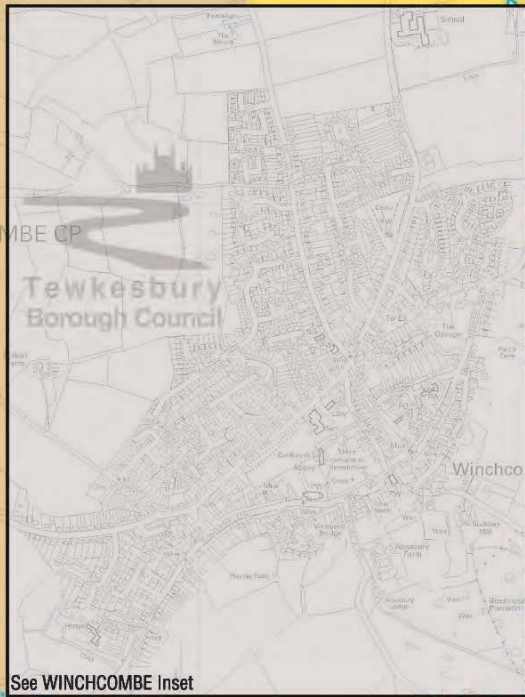
See BISHOPS CLEEVE SOUTH Inset



Scale 1:20,000



This map is based on Ordnance Survey material with the permission of Ordnance Survey on behalf of the Controller of Her Majesty's Stationery Office. © Crown copyright. Unauthorised reproduction infringes Crown copyright and may lead to prosecution or civil proceedings. Licence No 100025298, 2008.



See WINCHCOMBE Inset

Cotswold District

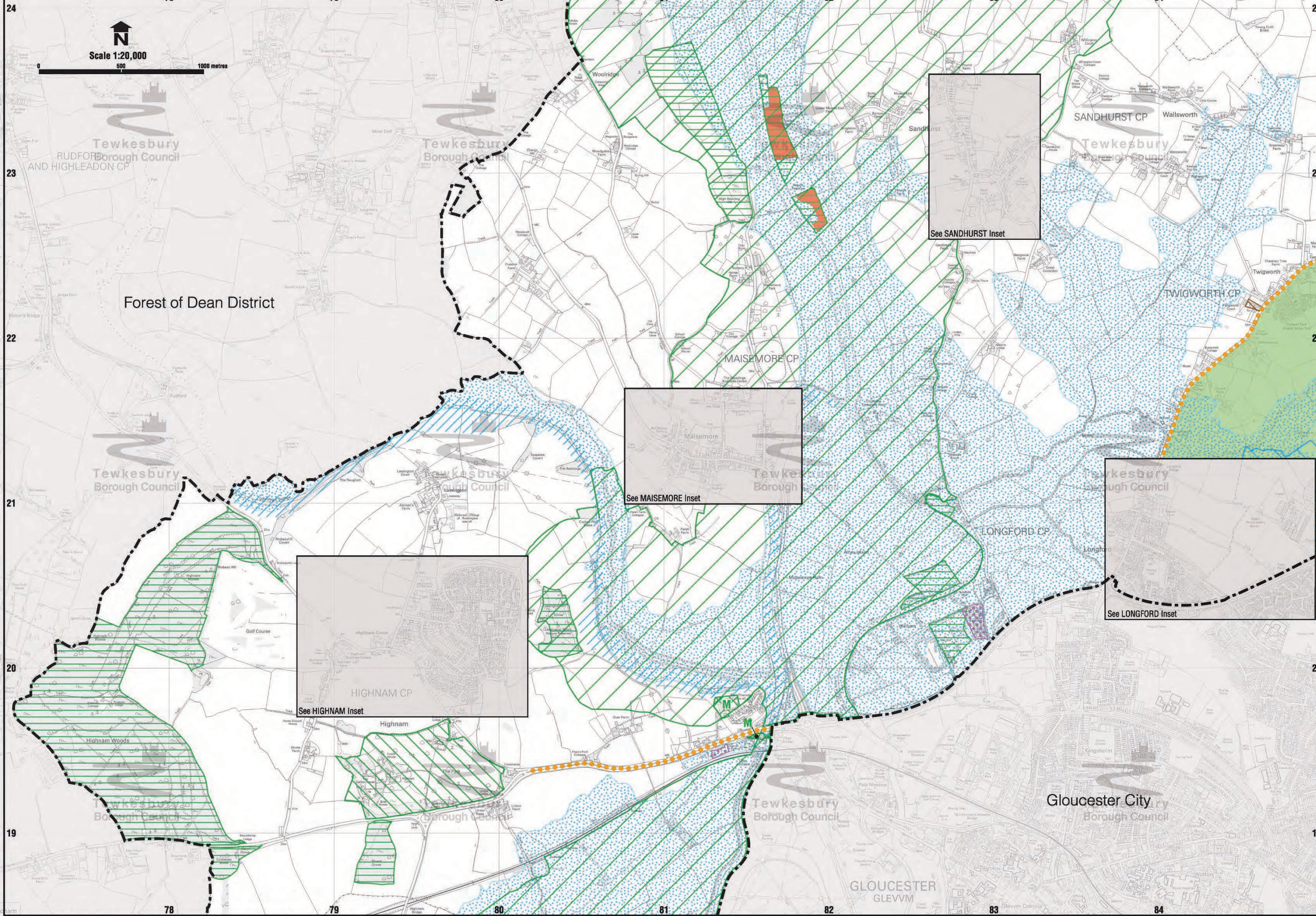
Scale 1:20,000
0 500 1000 metres



Scale 1:20,000

500

1000 metres



Tewkesbury Borough Council

Tewkesbury Borough Council

SANDHURST CP

Tewkesbury Borough Council

Forest of Dean District

MAISEMORE CP

TWIGWORTH CP

Tewkesbury Borough Council

Tewkesbury Borough Council

See MAISEMORE Inset

LONGFORD CP

Tewkesbury Borough Council

See LONGFORD Inset

HIGHNAM CP

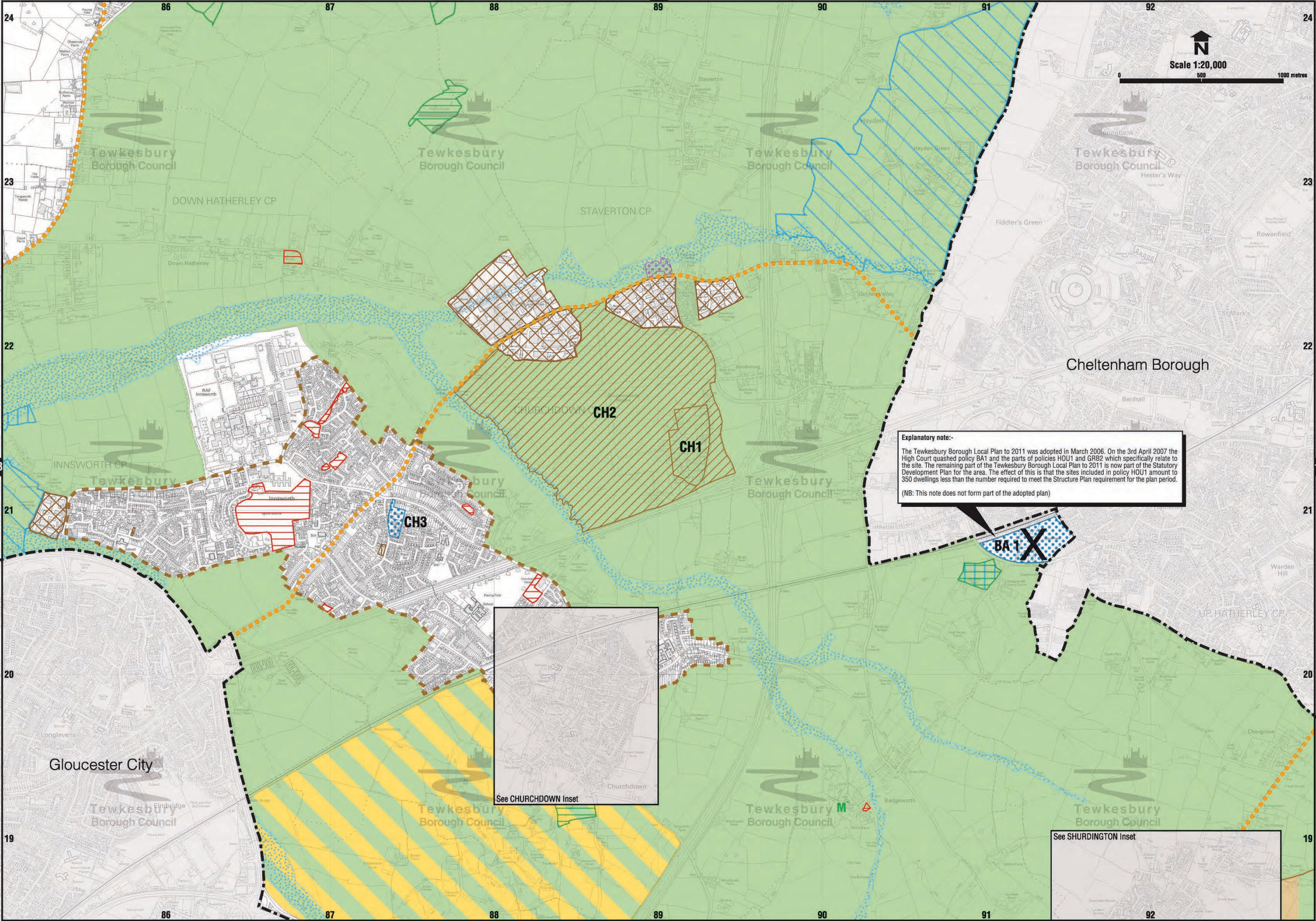
See HIGHNAM Inset

Highnam

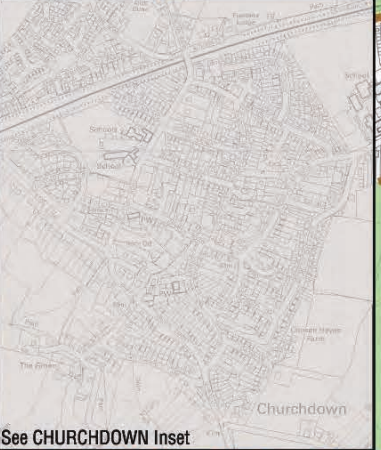
Tewkesbury Borough Council

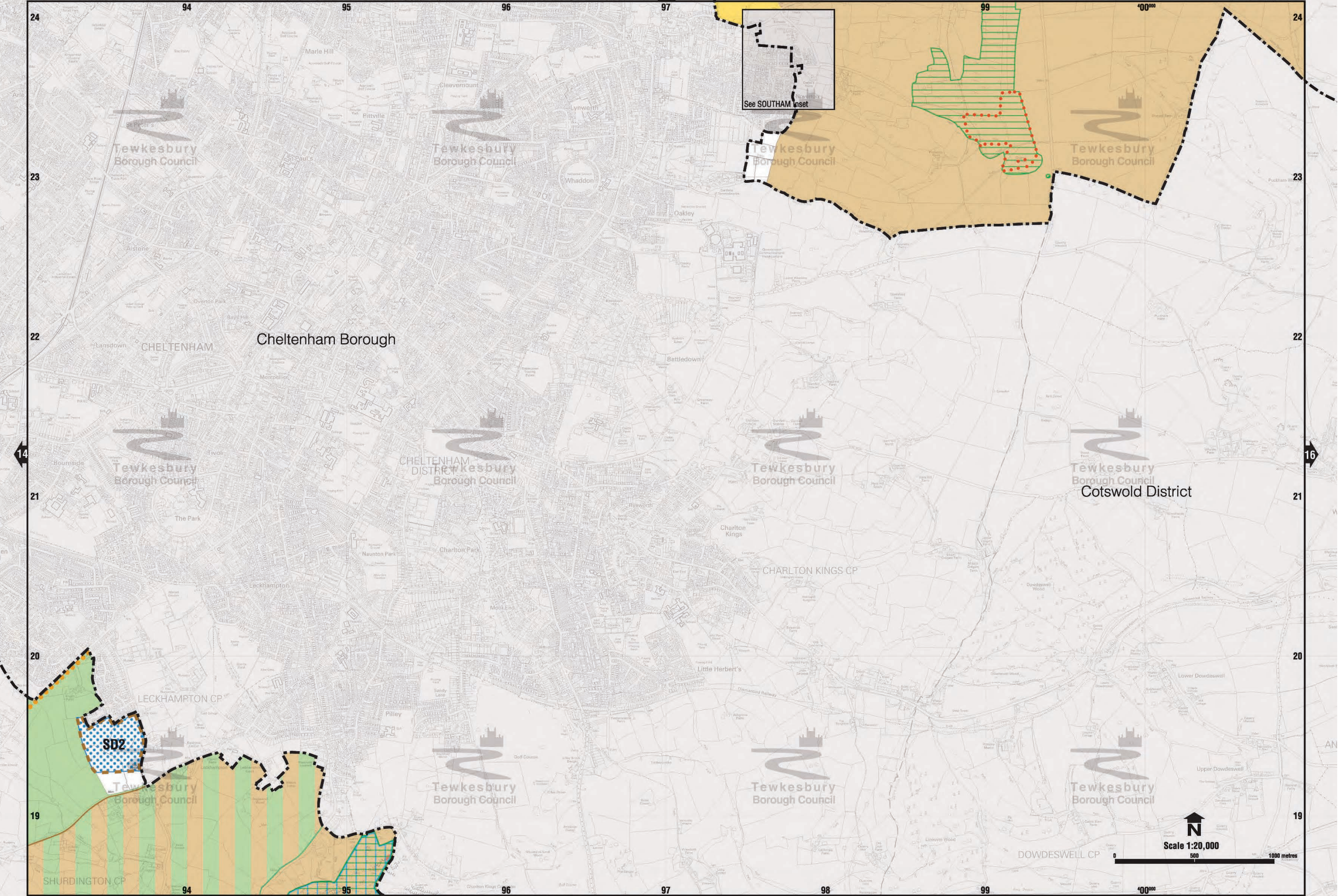
Gloucester City Borough Council

GLOUCESTER GLEWVW



Explanatory note:-
 The Tewkesbury Borough Local Plan to 2011 was adopted in March 2006. On the 3rd April 2007 the High Court quashed policy BA1 and the parts of policies HOU1 and GRB2 which specifically relate to the site. The remaining part of the Tewkesbury Borough Local Plan to 2011 is now part of the Statutory Development Plan for the area. The effect of this is that the sites included in policy HOU1 amount to 350 dwellings less than the number required to meet the Structure Plan requirement for the plan period.
 (NB: This note does not form part of the adopted plan)





See SOUTHAM inset

Tewkesbury Borough Council

Tewkesbury Borough Council

Tewkesbury Borough Council

Tewkesbury Borough Council

Cheltenham Borough

Tewkesbury Borough Council

Cheltenham District
Tewkesbury Borough Council

Tewkesbury Borough Council

Tewkesbury Borough Council

Cotswold District

LECKHAMPTON CP

CHARLTON KINGS CP

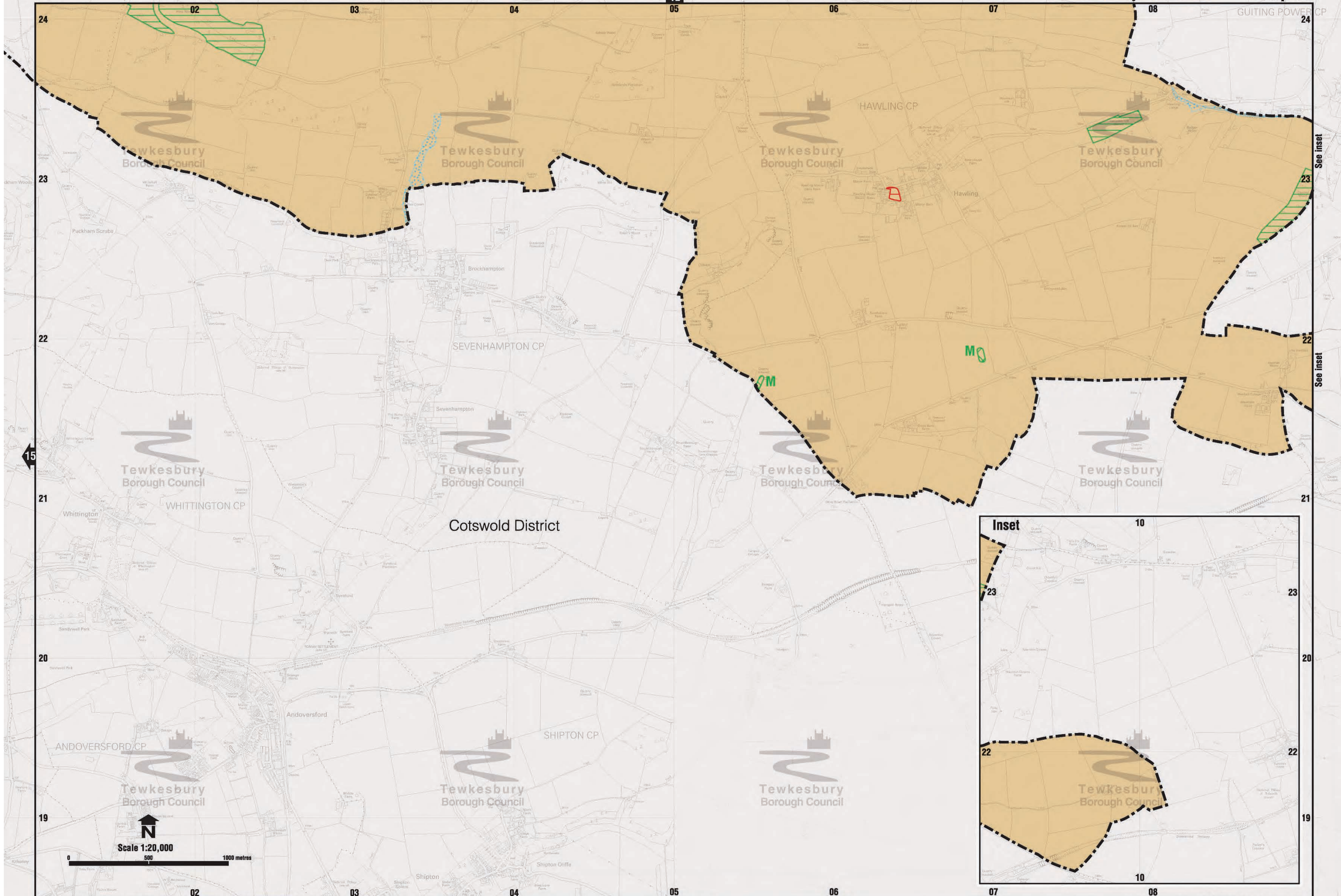
DOWDESWELL CP

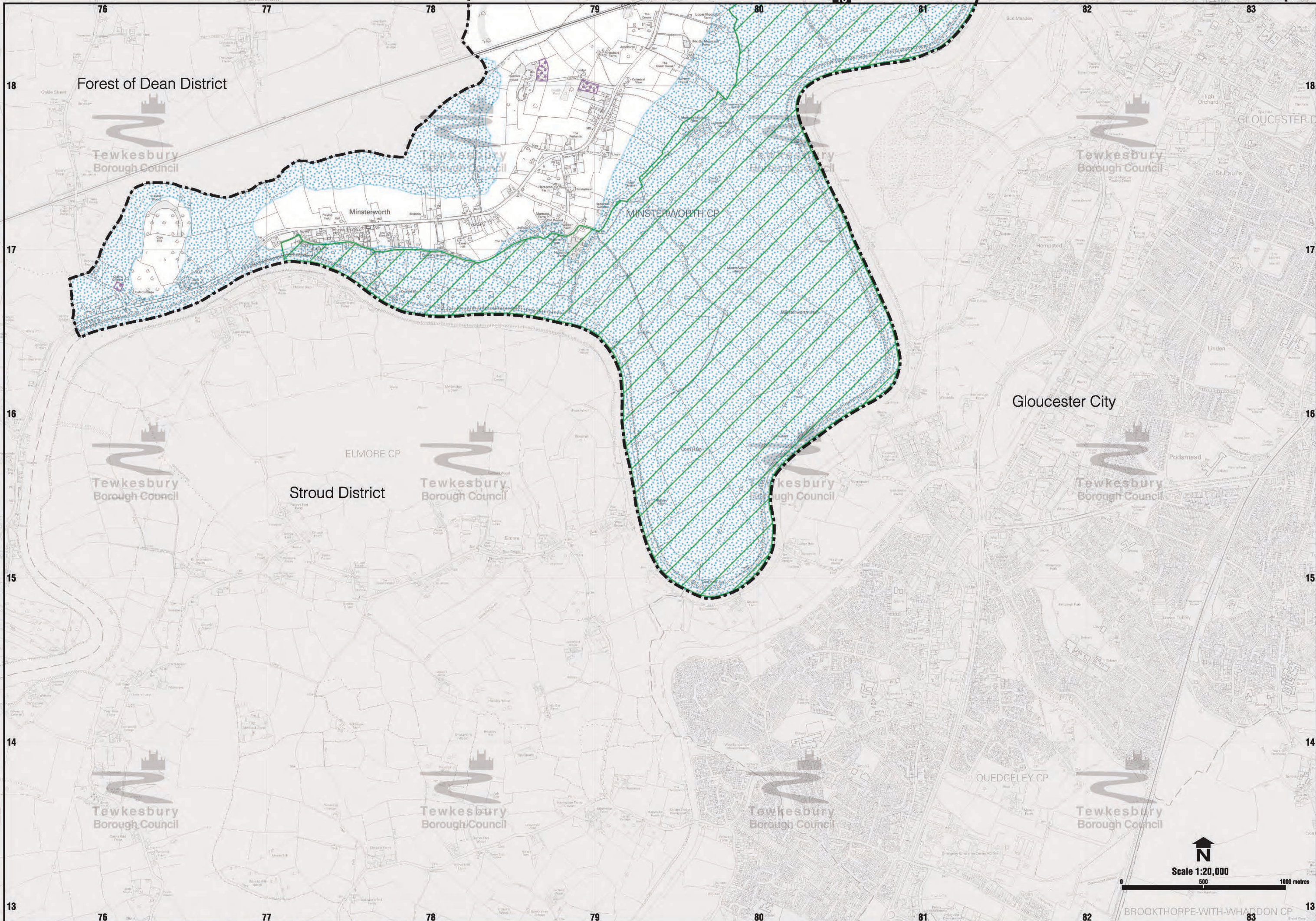
SHURDINGTON CP

Scale 1:20,000
500 1000 metres

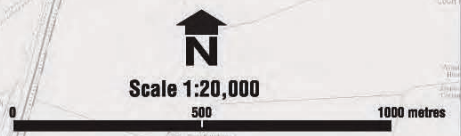
This map is based on Ordnance Survey material with the permission of Ordnance Survey on behalf of the Controller of Her Majesty's Stationery Office. © Crown copyright. Unauthorised reproduction infringes Crown copyright and may lead to prosecution or civil proceedings. Licence No 100025298. 2008.

Digital cartography by Mapping Ideas Ltd





This map is based on Ordnance Survey material with the permission of Ordnance Survey on behalf of the Controller of Her Majesty's Stationery Office. © Crown copyright. Unauthorised reproduction infringes Crown copyright and may lead to prosecution or civil proceedings. Licence No 100025298. 2008.



BROOKTHORPE-WITH-WHADDON CP

